



# **Trended Data for Selected Health Outcomes**

*(2002 to 2005)*

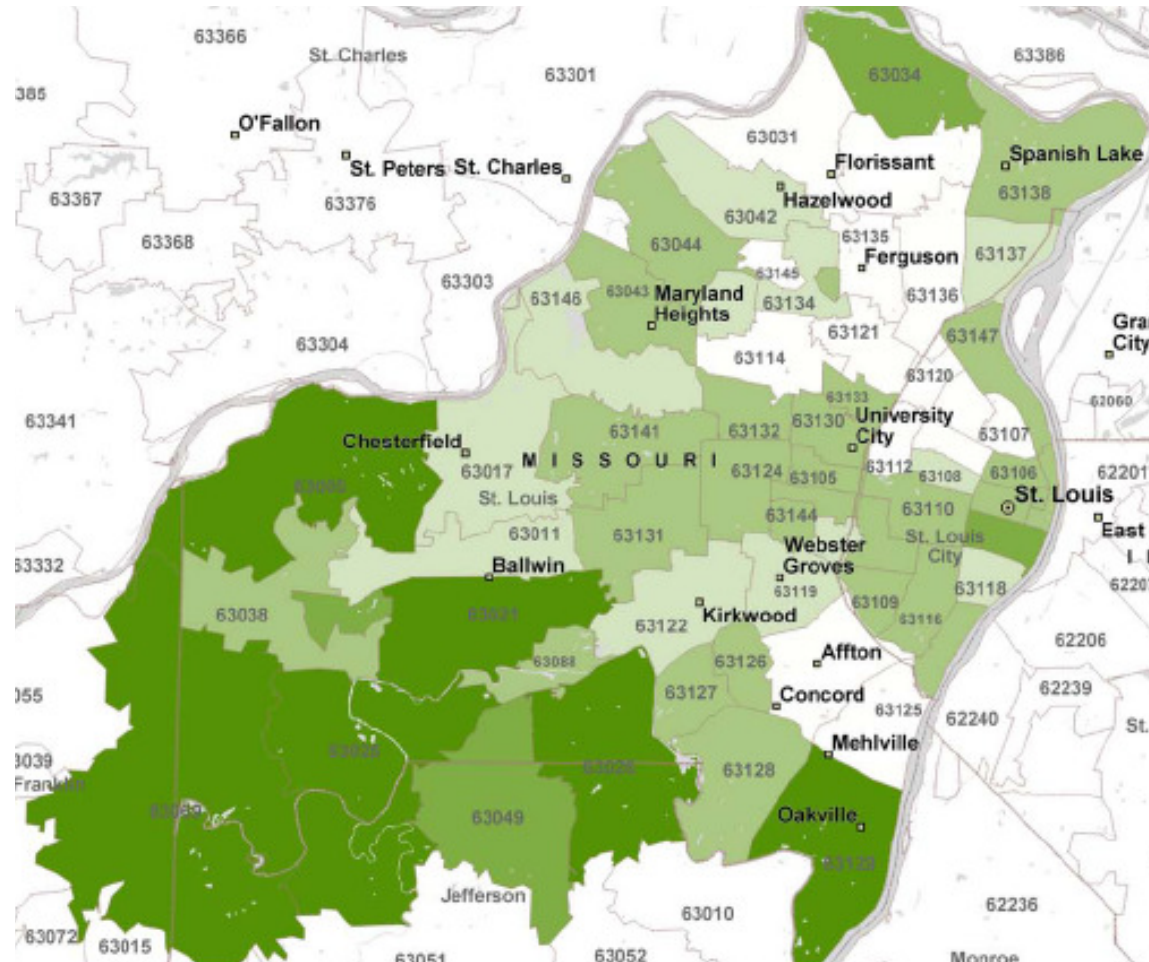
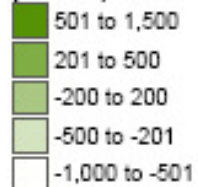


# CHANGE IN POPULATION

(2002 – 2005)

- From 2002 to 2005, St. Louis City experienced a drop in population of 4,368 people (1.3%)
- St. Louis County experienced a drop in population of 9,849 people (1.0%) during this same time period

Change in Population 2002 to 2005 by ZIP Code (No. of persons)



Demographic data from Claritas, Inc.



# HEALTH STATUS IN MISSOURI COMPARED TO OTHER STATES

- Missouri ranks poorly on many health indicators per a recent Commonwealth Fund Commission Report – June 2007

- Overall, Missouri ranks 37<sup>th</sup> in the Nation in terms of health system performance across 5 key dimensions: access, quality, avoidable hospital use and costs, equity, and healthy lives
- Missouri ranks in the bottom quartile for infant mortality; colorectal cancer death; adults limited in activities due to physical, mental or emotional problems; and admissions for pediatric asthma
- Missouri ranks 47<sup>th</sup> with respect to obesity with 62.4% of Missourians being overweight or obese
- 7.7% of Missourians have been told by a physician that they have diabetes (30<sup>th</sup> place)
- 23.4% of Missourians smoke (41<sup>st</sup> place)



# SELECTED HEALTH OUTCOMES

*(2002 and 2005)*

The following indicators were analyzed for St. Louis City and County to identify potential trends in health outcomes in our community since the RHC's 2003 report:

Heart Disease Mortality

Infant Mortality

Low Birth Weight Infant

Elevated Lead Levels Among Children (0 – 5 yrs)

HIV Infection Incidence

Diabetes Mortality

Births With Adequate Prenatal Care

Suicide Rates

Preventable Hospitalizations

Sexually Transmitted Diseases

This analysis did not examine the link between socioeconomic status and race and health outcome disparities. The 2003 “Building a Healthier St. Louis” report detailed some of these disparities. As the socioeconomic and racial makeup of zip codes in the region did not markedly change from 2003, it is presumed that these disparities still remain in our community.

*The above indicators were selected in 2003 for periodic public reporting by the RHC's Measurement Workgroup after extensive dialogue and community input. Please see “Recommendations for Improving the St. Louis Region's Health Care Safety Net System” issued by the RHC in October 2003, available at [www.stlrhc.org](http://www.stlrhc.org) for more information concerning the methodology for selecting the reported indicators..*



# HEART DISEASE MORTALITY

*(2002 to 2005)*

- Heart disease mortality fell 12.7% in the St. Louis region from 2002 to 2005
- Heart disease mortality rates fell in both the City and County during this time period but remain above the national average and Healthy 2010 goal
- While heart mortality is slightly higher in the City as compared to the county, higher mortality rates occurred in selected zip codes throughout the St. Louis metropolitan area

Health outcome data from the State of Missouri, Department of Health and Human Services, Missouri Information for Community Assessment (MICA) and from the Centers for Disease Control and Prevention, Division of Vital Statistics, National Vital Statistics Report. Census data from the University of Missouri Extension, Office of Social and Economic Data Analysis.

	<b>2002</b> (Crude rate per 100,000)	<b>2005</b> (Crude rate per 100,000)	<b>Healthy 2010 Goal</b>
<b>IMPROVING</b> St. Louis City	342	292	166
<b>IMPROVING</b> St. Louis County	307	270	166
<b>IMPROVING</b> St. Louis City / Co. Region	316	276	166
<b>IMPROVING</b> Missouri	292	256	166
<b>IMPROVING</b> United States	242 (2002)	222 (2004)	166

80% of deaths reported in Missouri's heart disease mortality are comparable to the coronary heart disease mortality marker used by HP2010.

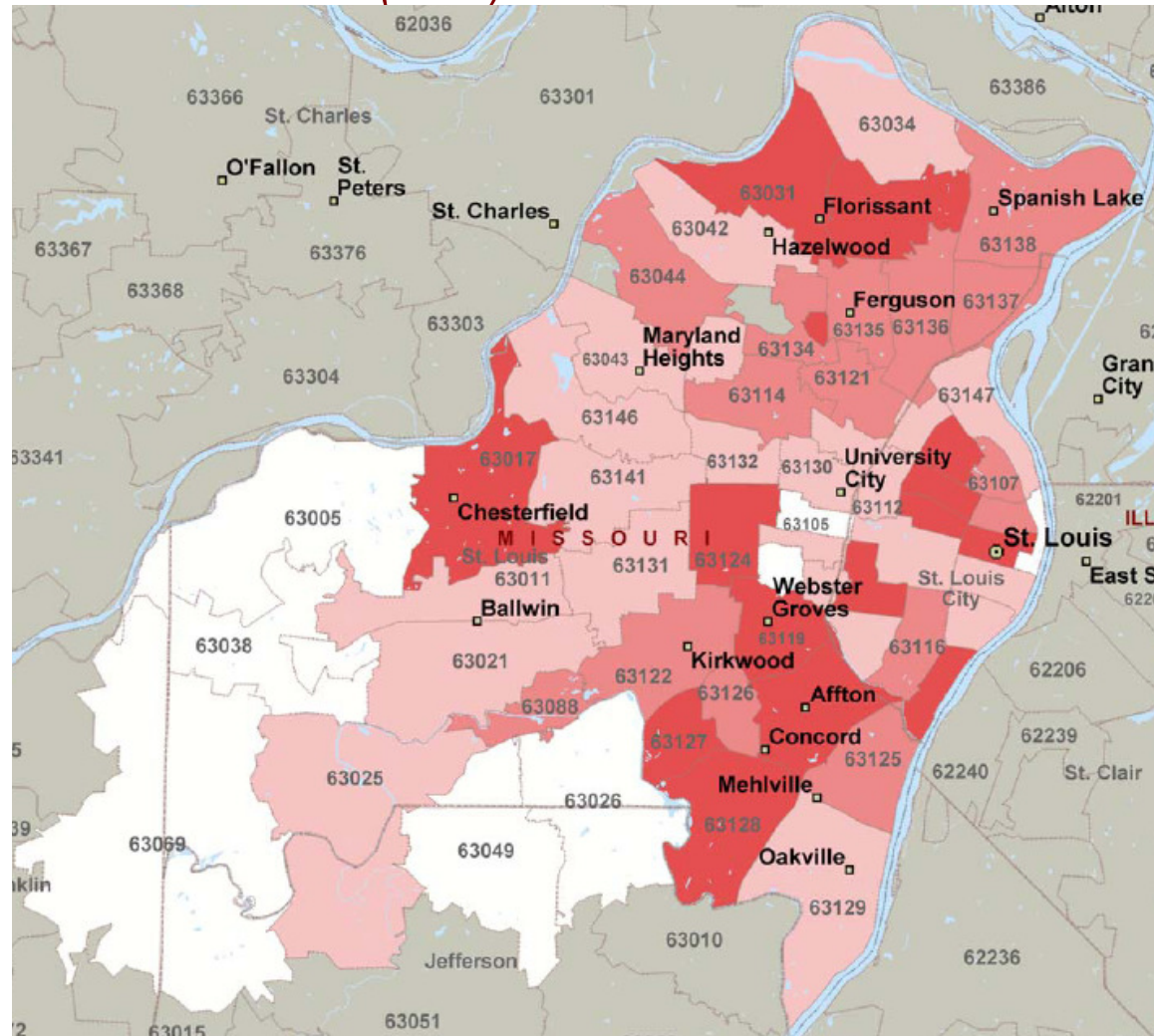


# HEART DISEASE MORTALITY

(2005)

## Heart Disease Mortality Rate Quartiles

- Highest (>330 per 100K)
- High (265 to 329 per 100K)
- Moderate (167 to 264 per 100K)
- Low (<167 per 100K)



Health outcome data from the State of Missouri, Department of Health and Human Services, Missouri Information for Community Assessment (MICA). Census data from the University of Missouri Extension, Office of Social and Economic Data Analysis.



# DIABETES MORTALITY

*(2002 to 2005)*

- Diabetes mortality increased 8.3% in Missouri from 2002 to 2005 but remained stable in St. Louis City and decreased slightly in St. Louis County
- Diabetes mortality is higher in the City of St. Louis and North St. Louis County as compared to St. Louis County
- The City, County, State, and Country rates (both crude and age-adjusted) are better than the Healthy People 2010 goal

	<b>2002</b> (Crude rate per 100,000)	<b>2005</b> (Crude rate per 100,000)	<b>Healthy 2010 Goal</b>
<b>NEUTRAL</b> St. Louis City	37	37	45
<b>IMPROVING</b> St. Louis County	27	25	45
<b>IMPROVING</b> St. Louis City / Co. Region	29	28	45
<b>WORSENING</b> Missouri	12	13	45
<b>IMPROVING</b> United States	75 (2000)	25 (2003)	45

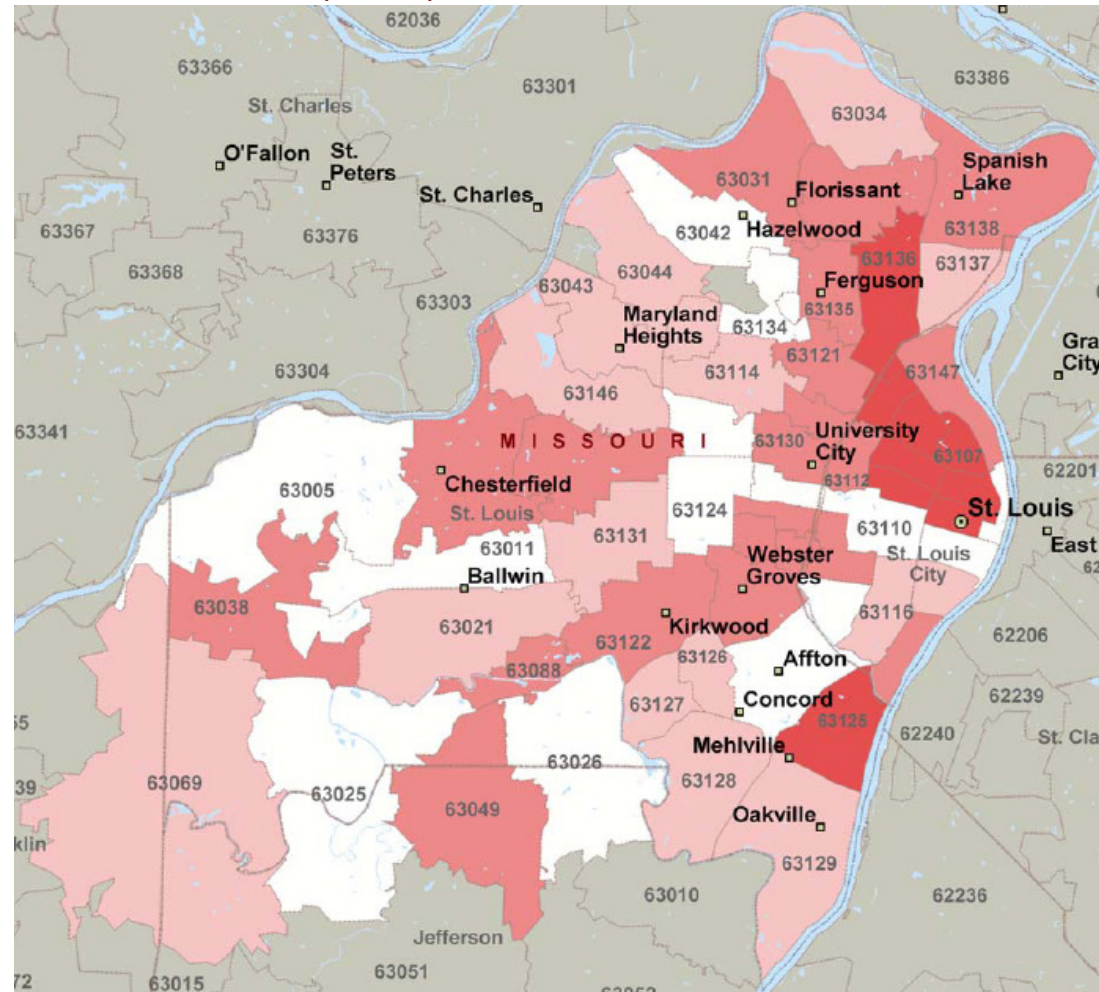
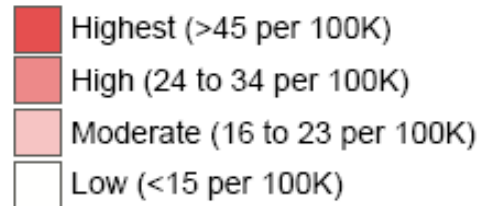
Health outcome data from the State of Missouri, Department of Health and Human Services, Missouri Information for Community Assessment (MICA) and the Centers for Disease Control and Prevention, Division of Vital Statistics, National Vital Statistics Report. Census data from the University of Missouri Extension, Office of Social and Economic Data Analysis.



# DIABETES MORTALITY

(2005)

## Diabetes Mortality Rate Quartiles



Health outcome data from the State of Missouri, Department of Health and Human Services, Missouri Information for Community Assessment (MICA). Census data from the University of Missouri Extension, Office of Social and Economic Data Analysis.



# INFANT MORTALITY

*(2002 to 2005)*

- Infant mortality rates decreased 11.8% in Missouri from 2002 to 2005
- Infant mortality rates fell in both the City and County during this same time period but remain above the national average and Healthy 2010 goal
- Infant mortality rates were highest in the City with a prevalence nearly twice the national average

**IMPROVING**

**IMPROVING**

**IMPROVING**

**IMPROVING**

**IMPROVING**

	<b>2002</b> (Rate per 1,000 live births)	<b>2005</b> (Rate per 1,000 live births)	<b>Healthy 2010 Goal</b> (Rate per 1,000 live births)
St. Louis City	13.8	12.4	5.0
St. Louis County	9.1	8.8	5.0
St. Louis City / Co. Region	10.5	9.8	5.0
Missouri	8.5	7.5	5.0
United States	7.2 (1997-9)	6.4 (2004)	5.0

Health outcome data from the State of Missouri, Department of Health and Human Services, Missouri Information for Community Assessment (MICA) and the Centers for Disease Control and Prevention, Division of Vital Statistics, National Vital Statistics Report.





# INADEQUATE PRENATAL CARE

*(2002 to 2005)*

- The State of Missouri considers prenatal care to be inadequate if pregnant women less than 37 weeks gestation have less than 5 prenatal visits and pregnancies over 37 weeks have less than 8 prenatal visits.
- The prevalence of inadequate prenatal care in St. Louis City decreased from 21% to 18%
- Overall, inadequacy of prenatal care in the St. Louis area is higher than the Missouri average but lower than the U.S. average for 2005
- Zip code mapping (next page) shows the highest rates of inadequate prenatal care occurring in St. Louis City and north St. Louis County

**IMPROVING**

**IMPROVING**

**IMPROVING**

**NEUTRAL**

**IMPROVING**

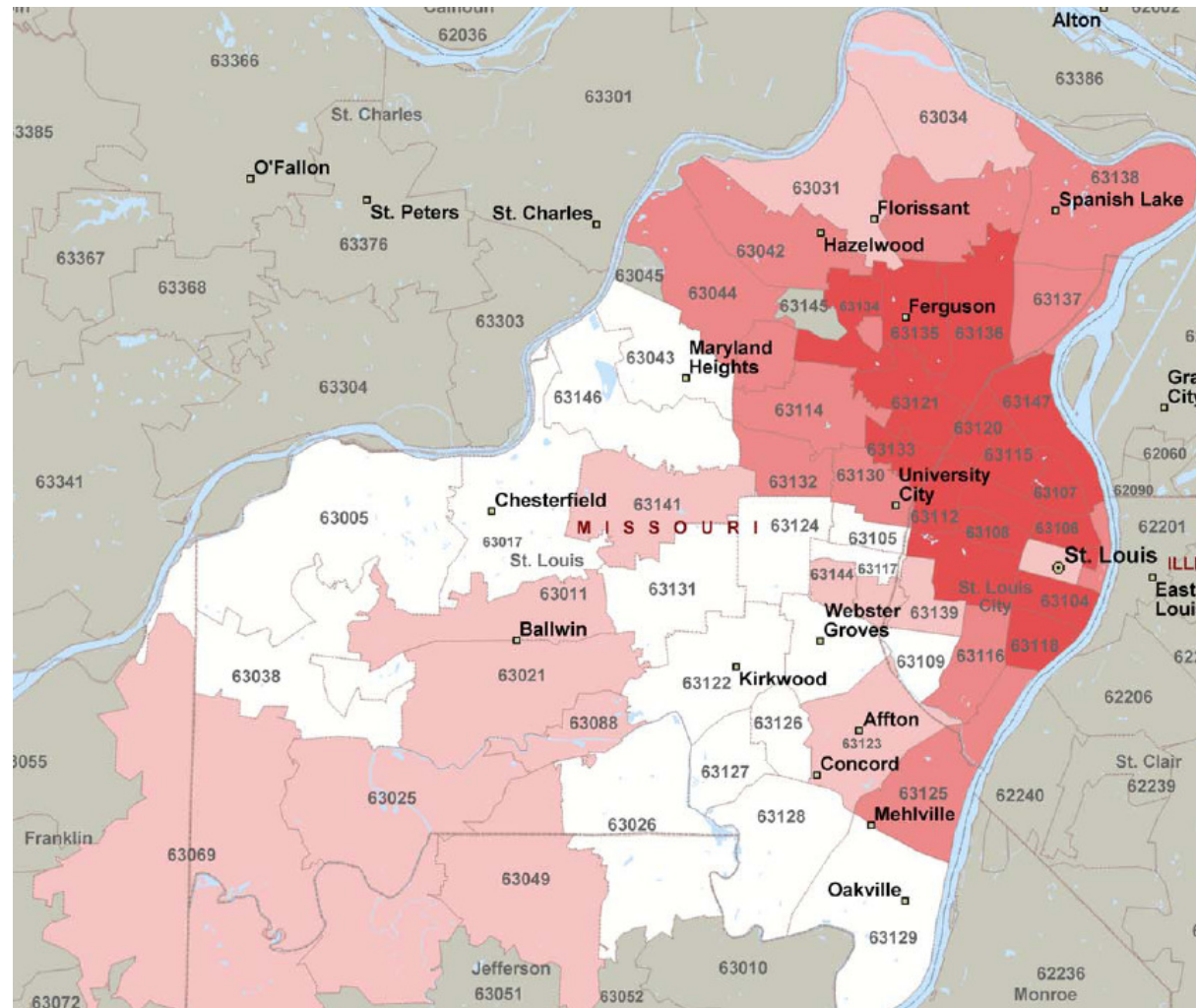
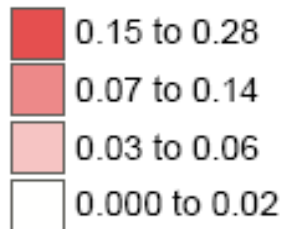
	<b>2002</b> (Percent of live births)	<b>2005</b> (Percent of live births)	<b>Healthy 2010 Goal</b>
St. Louis City	21%	18%	10%
St. Louis County	10%	9%	10%
St. Louis City / Co. Region	13%	12%	10%
Missouri	14%	14%	10%
United States	24% (2002)	19% (2005)	10%

Health outcome data from the State of Missouri, Department of Health and Human Services, Missouri Information for Community Assessment (MICA) and the United Health Foundation, "America's Health Rankings."



# INADEQUATE PRENATAL CARE (2005)

**Percentage of Live Births with Inadequate Prenatal Care**



Health outcome data from the State of Missouri, Department of Health and Human Services, Missouri Information for Community Assessment (MICA).



# INCIDENCE OF LOW BIRTH WEIGHT INFANTS

*(2002 to 2005)*

- Low birth weight infants are those born weighing less than 2500 grams (approximately 5.5 pounds)
- The incidence of low birth weight infants (LBW) decreased in both St. Louis City and County from 2002 to 2005 while the LBW rate in Missouri as a whole remained unchanged
- While encouraging, the LBW incidence remains higher in the St. Louis area as compared to the incidence state-wide and nationally
- Zip code mapping shows the incidence of LBW infants to be highest in St. Louis City and north St. Louis County – this correlates with the incidence of inadequate prenatal care in these zip codes

**IMPROVING**

**IMPROVING**

**IMPROVING**

**NEUTRAL**

**WORSENING**

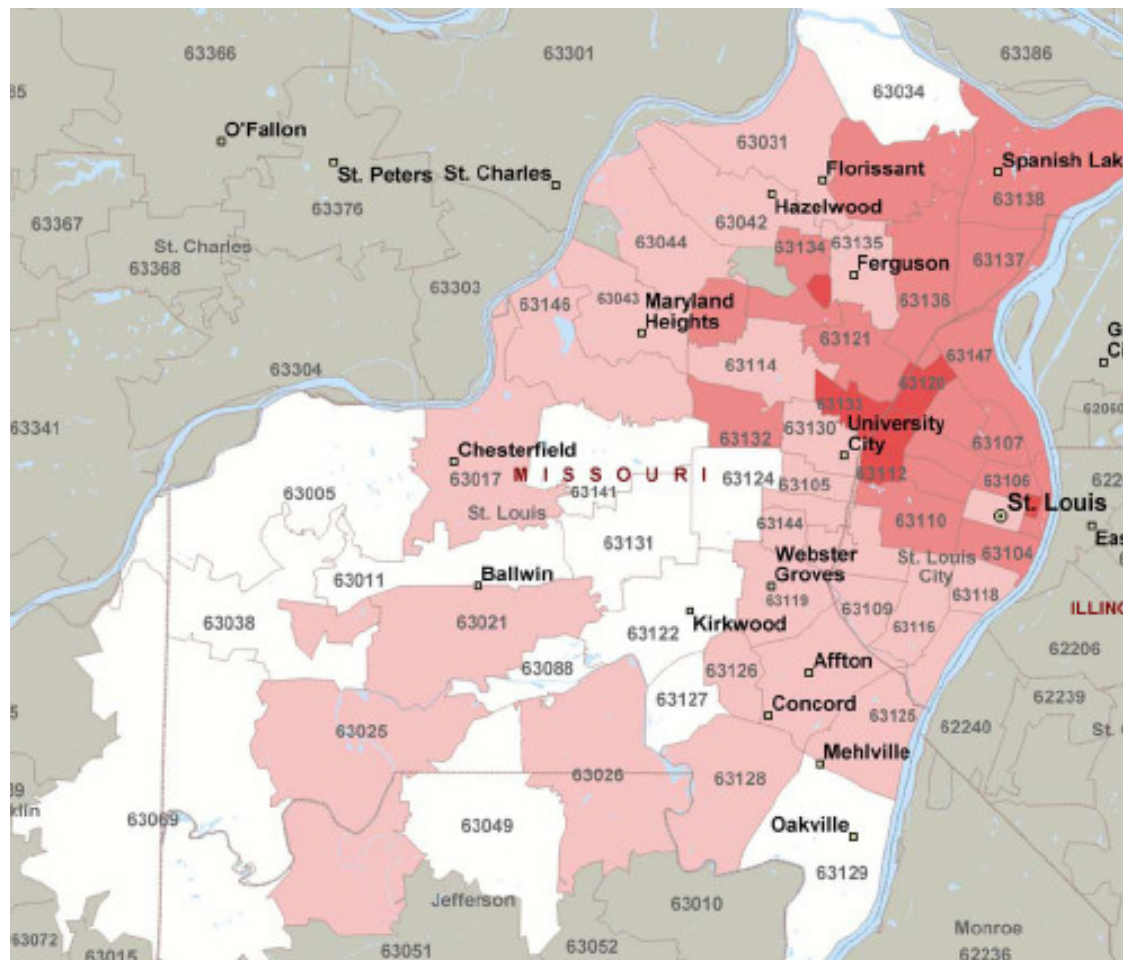
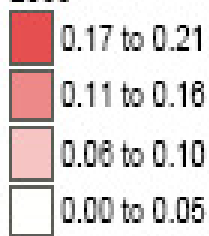
	<b>2002</b> (Percent of live births)	<b>2005</b> (Percent of live births)	<b>Healthy 2010 Goal</b>
St. Louis City	12.5%	12.0%	5.0%
St. Louis County	9.1%	8.7%	5.0%
St. Louis City / Co. Region	10.1%	9.7%	5.0%
Missouri	8.1%	8.1%	5.0%
United States	7.7% (2001)	8.1% (2004)	5.0%

Health outcome data from the State of Missouri, Department of Health and Human Services, Missouri Information for Community Assessment (MICA) and the Centers for Disease Control and Prevention, Division of Vital Statistics, National Vital Statistics Report.



# INCIDENCE OF LOW BIRTH WEIGHT INFANTS (2005)

Low Birth  
Weight  
Deliveries as a  
Percentage of  
All Deliveries  
2005



Health outcome data from the State of Missouri,  
Department of Health and Human Services, Missouri  
Information for Community Assessment (MICA).



# SCREENED PREVALENCE RATES FOR ELEVATED LEAD LEVELS

*(2002 to 2004)*

- The prevalence of elevated lead levels among children less than 6 years of age tested for elevated lead levels decreased 23% in St. Louis City from 2002 to 2004
- Screened prevalence rates for elevated lead levels also declined in St. Louis County from 2002 to 2004
- Screened prevalence rates for elevated lead levels in St. Louis City are approximately three times worse than the state average

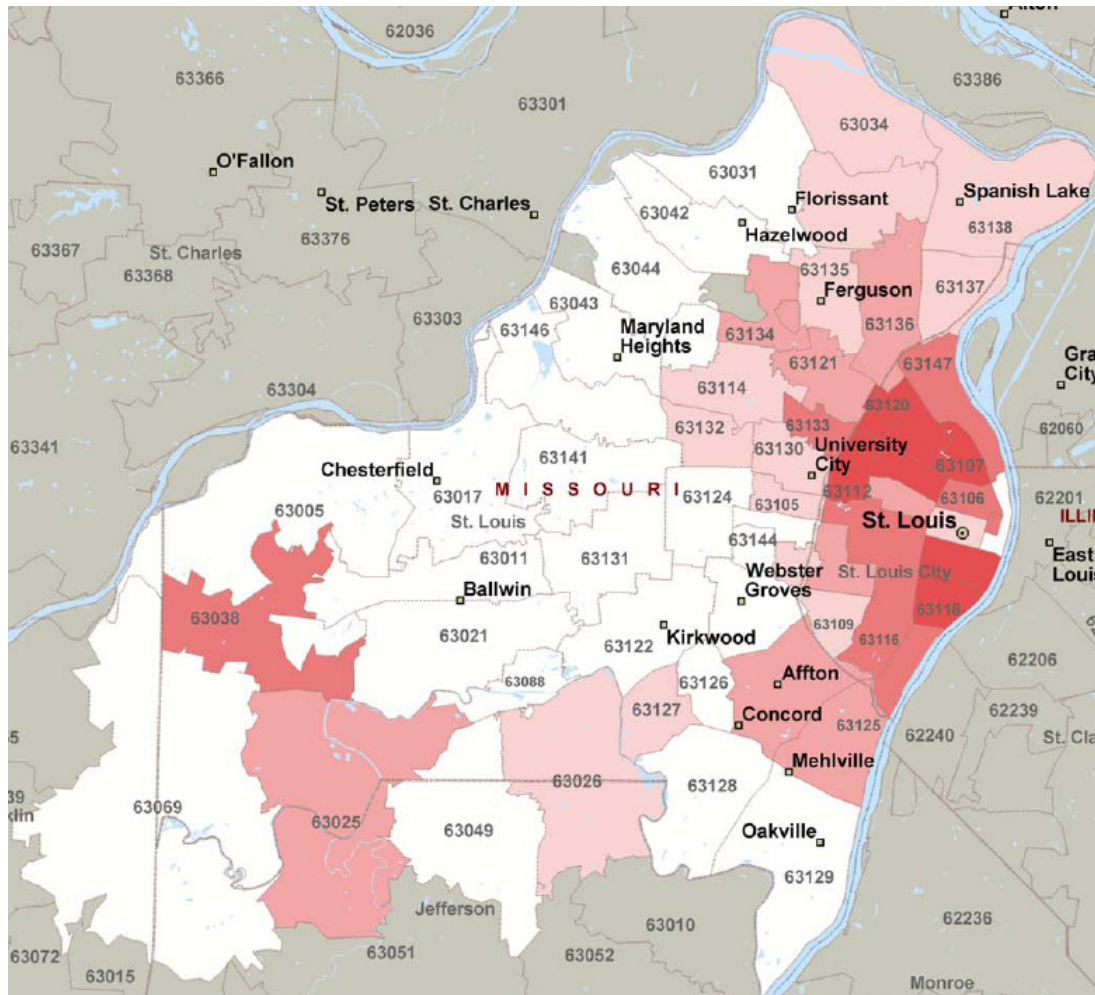
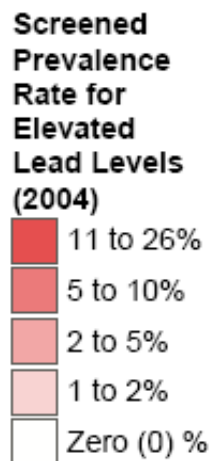
	<b>2002</b> (Screened prevalence rate)	<b>2004</b> (Screened prevalence rate)
<b>IMPROVING</b> St. Louis City	14.7%	11.3%
<b>IMPROVING</b> St. Louis County	2.3%	1.8%
<b>IMPROVING</b> St. Louis City / Co. Region	8.1%	6.5%
<b>IMPROVING</b> Missouri	5.0%	3.6%

Note: Most recent available data is for 2004

Health outcome data and population data from St. Louis County Department of Health, Population Estimates, Screening Rates, and Elevated Lead Levels for years 2002 and 2004 for all Missouri zip codes.



# SCREENED PREVALENCE RATES FOR ELEVATED LEAD LEVELS (2004)



Health outcome data and population data from St. Louis County Department of Health, Population Estimates, Screening Rates, and Elevated Lead Levels for years 2002 and 2004 for all Missouri zip codes.



# SUICIDE RATES

(2002 to 2005)

- The rate of suicide fell slightly in St. Louis City from 2002 to 2005
- The suicide rate in St. Louis County remained unchanged
- Both St. Louis City and County have lower rates of suicide as compared to state-wide and national rates

	<b>2002</b> (Crude rate per 100,000)	<b>2005</b> (Crude rate per 100,000)	<b>Healthy 2010 Goal</b>
<b>IMPROVING</b>	10.9	10.7	6.0
<b>NEUTRAL</b>	10.3	10.3	6.0
<b>NEUTRAL</b>	10.5	10.4	6.0
<b>WORSENING</b>	12.1	12.6	6.0
<b>WORSENING</b>	10.7 (2001)	11.0 (2004)	6.0

Health outcome data from the State of Missouri, Department of Health and Human Services, Missouri Information for Community Assessment (MICA) and the Centers for Disease Control and Prevention, National Center for Health Statistics, "Health, United States." Census data from the University of Missouri Extension, Office of Social and Economic Data Analysis.



# PREVENTABLE HOSPITALIZATIONS

(2002 to 2005)

- Preventable hospitalizations are considered acute care hospital discharges for which timely and effective outpatient care could have prevented the onset of illness, controlled an acute episodic illness, or managed a chronic disease and thereby avoided hospitalization. In Missouri, specific diagnosis codes are linked to hospital discharges and tabulated to provide preventable hospitalizations data.
- The prevalence of preventable hospitalizations fell 8.8% in St. Louis City from 2002 to 2005 but still remains significantly higher than the rate state-wide
- The prevalence of preventable hospitalizations increased in St. Louis County from 2002 to 2005

	<b>2002</b> (Crude rate per 100,000)	<b>2005</b> (Crude rate per 100,000)	
<b>IMPROVING</b>	St. Louis City	2415	2202
<b>WORSENING</b>	St. Louis County	1272	1418
<b>WORSENING</b>	St. Louis City / Co. Region	1546	1606
<b>WORSENING</b>	Missouri	1420	1451



# INCIDENCE OF HIV INFECTION

*(2002 to 2005)*

- The incidence of HIV infections decreased in St. Louis City and County from 2002 to 2005 while the state-wide incidence of HIV infections increased slightly
- Zip code mapping shows that HIV infection rates in St. Louis City and north St. Louis County remain significantly above that seen state-wide and nationally

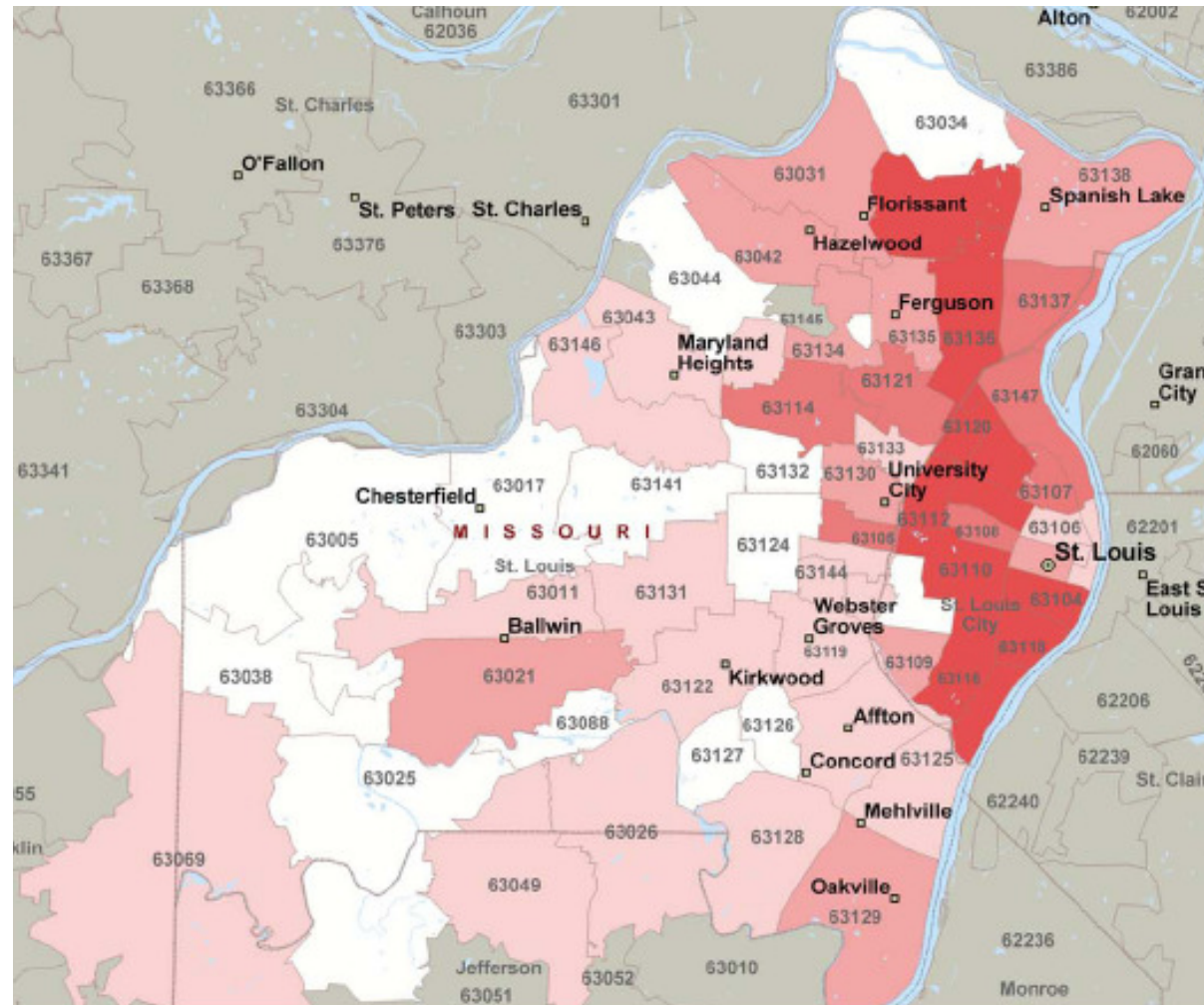
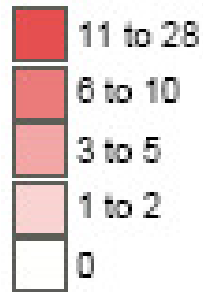
	<b>2002</b> (Crude rate per 100,000)	<b>2005</b> (Crude rate per 100,000)
<b>IMPROVING</b> St. Louis City	52.0	50.2
<b>IMPROVING</b> St. Louis County	11.0	10.2
<b>IMPROVING</b> St. Louis City / Co. Region	20.7	19.6
<b>WORSENING</b> Missouri	10.6	10.7
<b>IMPROVING</b> United States	14.0 (2002)	13.6 (2005)

Health outcome data from the State of Missouri; Department of Health and Human Services; Bureau of HIV, STD, and Hepatitis and the Henry J. Kaiser Family Foundation, "HIV/AIDS Factsheet."



# INCIDENCE OF HIV INFECTION (2005)

Diagnosed  
Cases of  
HIV in 2005



Health outcome data from the State of Missouri;  
Department of Health and Human Services; Bureau of  
HIV, STD, and Hepatitis.



# INCIDENCE OF SEXUALLY TRANSMITTED DISEASES

(2002 to 2004)

- Data includes new cases of Gonorrhea, Chlamydia, Early Syphilis, and Primary and Secondary Syphilis.
- The same regions in St. Louis City and North St. Louis County are found to have an increased incidence of STDs whether mapping each STD separately or aggregating these three STDs together (next page).
- Variances in reporting practices between community health centers within the City and private practitioners in the County may understate the STD incidence in St. Louis County.

**WORSENING**

**WORSENING**

**WORSENING**

**WORSENING**

**WORSENING**

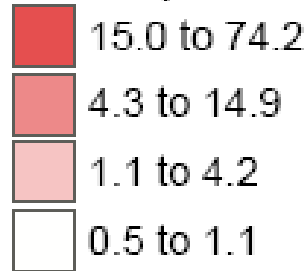
	<b>2002</b> (Crude rate per 100,000)	<b>2005</b> (Crude rate per 100,000)
St. Louis City	1713.4	2115.1
St. Louis County	473.7	638.7
St. Louis City / Co. Region	790.8	1016.4
Missouri	443.3	562.1
United States	414.7	459.6

Health outcome data from the State of Missouri; Department of Health and Human Services; Bureau of HIV, STD, and Hepatitis and the Centers for Disease Control and Prevention, STD Surveillance 2002 and STD Surveillance 2004.

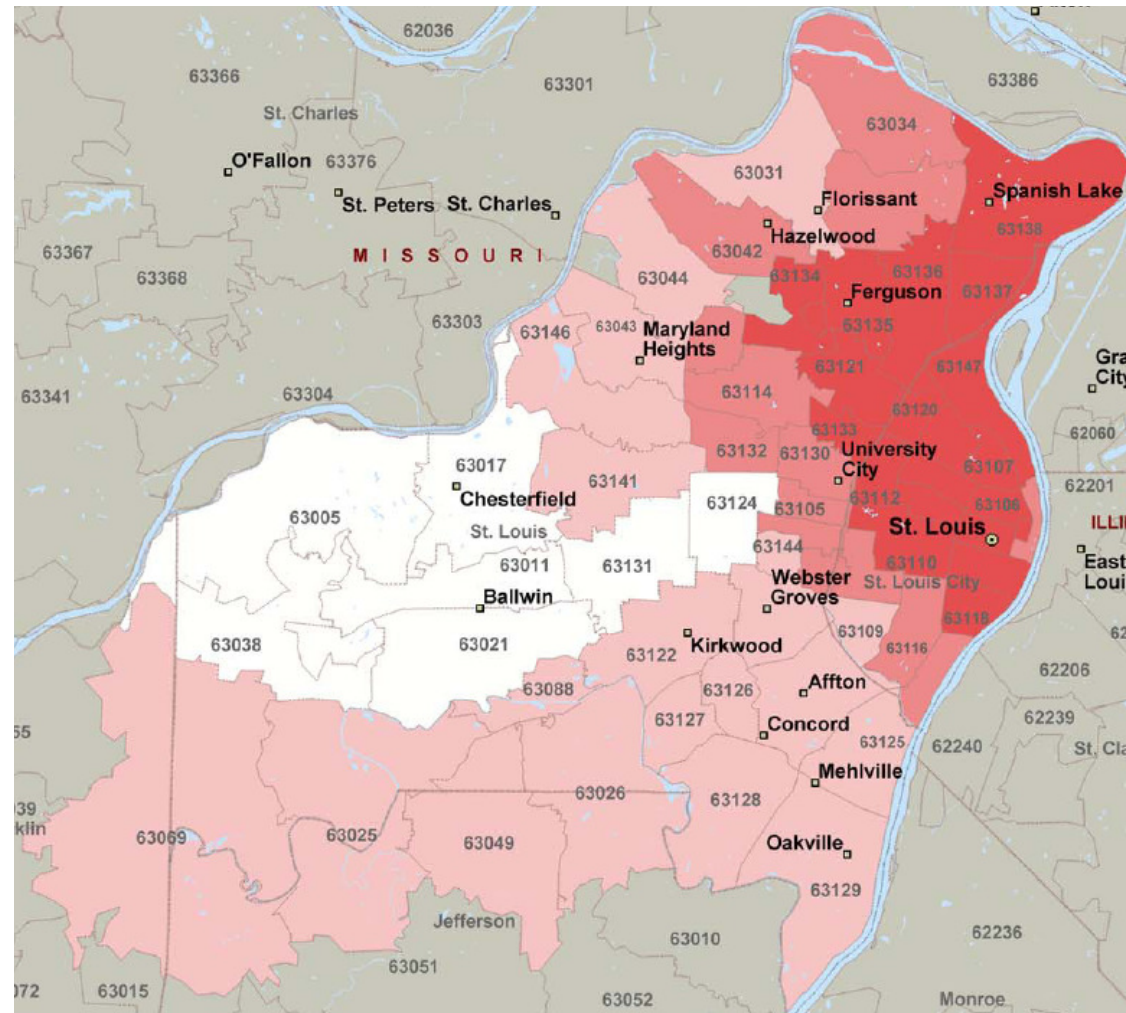


# INCIDENCE OF SEXUALLY TRANSMITTED DISEASES (2005)

**Incidence Rate  
Quartiles (per  
100,000)**



Variances in reporting practices between community health centers in the City and private practitioners in the County may understate STD incidence in St. Louis County.



Health outcome data from the State of Missouri;  
Department of Health and Human Services; Bureau of  
HIV, STD, and Hepatitis.